

TK102 and TK103 GPS Tracker User Manual

Created by CorvusGPS.com



CorvusGPS.com
Fleet and Field Service Management

COMPATIBLE MODELS:

TK102 * TK102-2 * TK103 * TK103-2 * TK102-B * TK103-A/B/C

COMPATIBLE MANUFACTURERS:

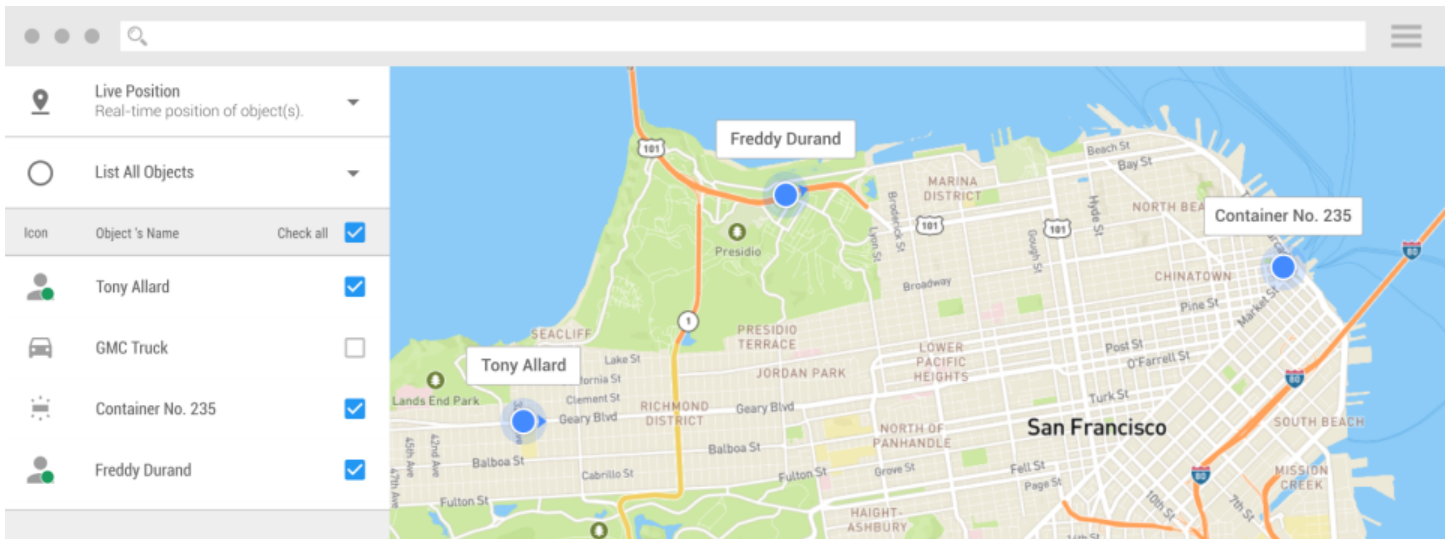
XEXUN, COBAN AND OTHER BRANDS

TABLE OF CONTENTS

- 1 About CorvusGPS.com's Fleet Tracking System
- 2 Cell Phone Tracking - GPS Tracker app for Android
- 3 Features of CorvusGPS Fleet Tracking System
 - 3.1 Real-Time GPS Tracking
 - 3.2 Track Cell Phones and Traditional GPS trackers
 - 3.3 Group Tracking - Track your Workforces
 - 3.4 Tracking Software for Web, Desktop and Mobile Phones
 - 3.5 Real-Time location share (view without registration)
- 4 Start Configuration
- 5 Step #1 - Insert SIM card and Turn the GPS tracker on
 - 5.1 Insert the SIM card into TK102
 - 5.2 Turn on the TK102 GPS tracker
- 6 Step #2 - Determine your GPS tracker's type
 - 6.1 Xexun type GPS trackers
 - 6.2 Coban type GPS trackers
 - 6.3 Unknown type GPS tracker
- 7 Step #3 - Configure your XEXUN type GPS tracker
- 8 Step #3 - Configure your COBAN type GPS tracker
- 9 Step #4 - Add the GPS tracker to your CorvusGPS account
- 10 The most frequent problems and solutions
 - 10.1 What is APN? / Wrong APN settings
 - 10.2 No GPS signal
 - 10.3 Invalid IMEI
 - 10.4 No Coordinates at the chosen interval
 - 10.5 If the device does not respond to SMS commands
- 11 List of all XEXUN commands

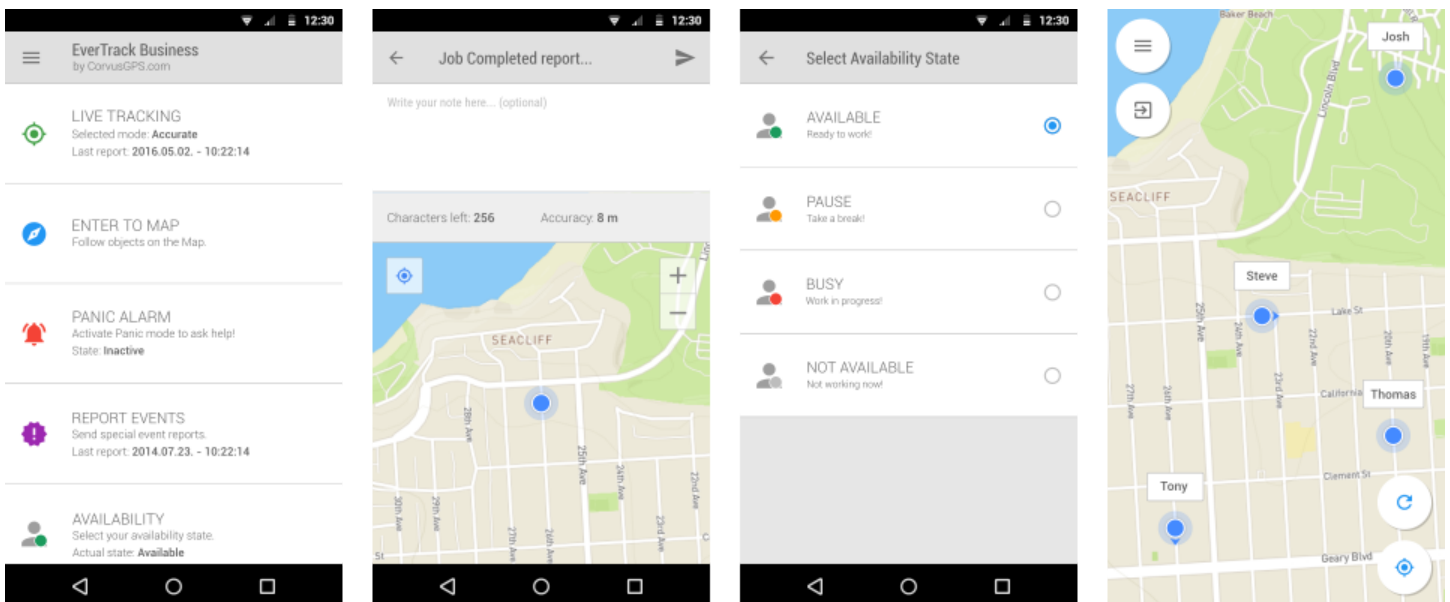
1 About CorvusGPS.com's Fleet Tracking System

Our [fleet tracking system](#) developed for companies to lower the workload of dispatchers and to simplify the work of field services. Our fleet tracking system helps controlling your company's vehicle fleet, assets or field services.



2 Cell Phone Tracking - GPS Tracker app for Android

With EverTrack [GPS tracker app](#) you can use any Android cell phones for fleet or field service management. Using the map module you can follow your GPS trackers or Mobile Phones added to CorvusGPS Fleet Tracking System.



[Download EverTrack GPS Tracker app from Play Store...](#)

[Download EverTrack GPS Tracker app from CorvusGPS.com...](#)

3 Features of CorvusGPS Fleet Tracking System

We show you a few features which can improve the productivity of your business, simplify controlling your staff and ensure better cooperation with your partners.

3.1 Real-Time GPS Tracking

CorvusGPS.com's Fleet Tracking system helps controlling your fleet, assets, vehicles or field services and assists you solving your usual management tasks in real-time.

3.2 Track Cell Phones and Traditional GPS trackers

Sometimes better to choose a traditional GPS tracker instead of EverTrack GPS tracker app. Our online GPS Fleet management system supports wide variety of traditional GPS trackers, providing you with the possibility to track your mobile assets, vehicles or workers in real-time.

3.3 Group Tracking - Track your Workforces

With creating groups you can check track the real-time position of all your team and vehicles at the same time on the same map. Group tracking helps you to manage your workforce, saving time and energy.

3.4 Tracking Software for Web, Desktop and Mobile Phones

CorvusGPS.com's online GPS Fleet Tracking software is web based, you don't need to install anything: a web browser and an internet connection is all you need. All of your data is stored in a secure cloud. Our mapping app can be installed on tablets and phones to stay connected with your fleet on the go.

3.5 Real-Time location share (view without registration)

Share the location of vehicles and coworkers with your clients or business partners easily with our real-time location share function. Our Tracking System generate a location share link what you can send anybody, no registration needed to check it. You can share the location of the whole fleet or a nearby coworker easily. By knowing the location of your fleet or a team member, business partners can prepare for the arrival of your colleague.

Check our real-time location share examples here:

[Example Link #1 - Real-time location share of one User or GPS Tracker](#)

[Example Link #2 - Real-time location share of a Group](#)

TK102 and TK103 GPS Tracker User Manual

Created by CorvusGPS.com



COMPATIBLE MODELS:

TK102 * TK102-2 * TK103 * TK103-2 * TK102-B * TK103-A/B/C

COMPATIBLE MANUFACTURERS:

XEXUN, COBAN AND OTHER BRANDS

4 Start Configuration

To start using CorvusGPS.com's Fleet Tracking System, follow these steps:

Step #1 - Insert a SIM card and Turn the tracker on

Step #2 - Determine your tracker's type

Step #3 - Configure your tracker with SMS commands

Step #4 - Register at CorvusGPS.com and add the device to your account

START CONFIGURATION PROCESS WITH **STEP #1**

5 Step #1 - Insert SIM card and Turn the GPS tracker on

The next few steps show you how to insert the SIM card and turn on your TK102 GPS tracker.

TK103 GPS trackers have different housing, but you need to do the same.

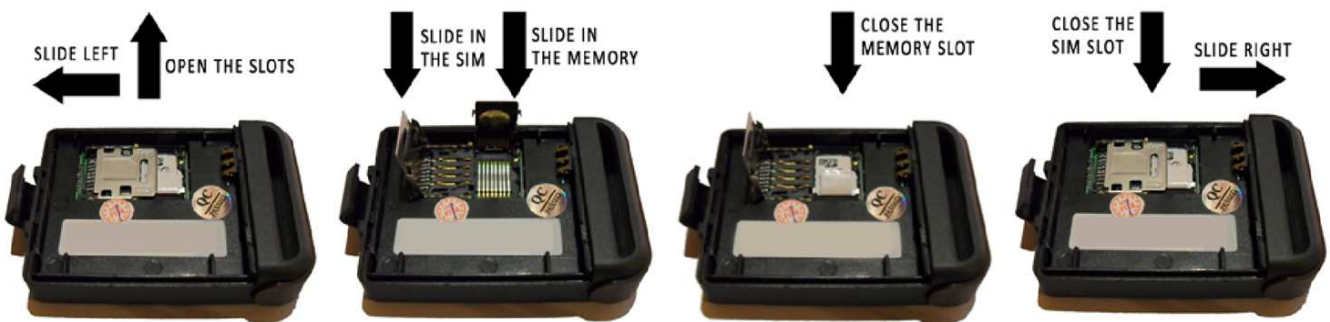
IMPORTANT NOTES!

Insert the SIM to a phone and check that the **SIM card has not run out of credit** and the **PIN code request is disabled**.

After the steps above are successfully completed, insert the SIM card to your GPS tracker and start the configuration process.

5.1 Insert the SIM card into TK102

After you make sure that the **SIM card has not run out of credit** and the **PIN code request is disabled**, insert the SIM card into the SIM slot. The Micro SD memory card is **optional**.



5.2 Turn on the TK102 GPS tracker



Status LED:

The LED is flashing fast when the device is searching for GSM network / GPS satellites and flashing slow when it was found.

On/Off button:

Press and hold the On/Off button (LED starts flashing fast) to turn the device on. Release the button when the status LED stops flashing. Do the same for turning the device off.

CONTINUE CONFIGURATION WITH **STEP #2**

6 Step #2 - Determine your GPS tracker's type

TK102 and TK103 GPS trackers have **different manufacturers**. To configure the GPS trackers origin from different manufacturers you need to send different texts in SMS.

So the first issue is to determinate what kind of GPS tracker you have...

6.1 Xexun type GPS trackers

GPS trackers with a number at the end of the model are usually (but not always) **Xexun type**.

Examples: TK102, TK102-2, TK103, TK103-2

6.2 Coban type GPS trackers

GPS trackers with a letter at the end of the model are usually (but not always) **Coban type**.

Examples: TK102-B, TK103-B, GPS103-A/B/C

6.3 Unknown type GPS tracker

There are a lot of manufacturer who produce TK102 and TK103 GPS trackers with the same design as "original" TK102 or TK103 GPS trackers, but sometimes the configuration and the communication of the tracker is totally different.

Don't know that your device is Xexun or Coban - or something different - type? Follow these steps:

- Check your manual and try to determine that the commands are similar to Xexun or Coban, then **FOLLOW XEXUN OR COBAN TYPE CONFIGURATION STEPS**.
- If not similar to any of them then try to follow the steps of Coban or Xexun type configuration, but **REPLACE THE COMMANDS** written in the manual of your device.

SELECT THE NEXT STEP

If you have a XEXUN type GPS tracker
continue with **STEP #3 - Xexun type configuration**

If you have a COBAN type GPS tracker
continue with **STEP #3 - Coban type configuration**

7 Step #3 - Configure your XEXUN type GPS tracker

Turn ON your GPS tracker and follow these steps carefully. After every (except the t030s***n123456) SMS you **must receive an „OK” message from the tracker** as a response - otherway the configuration wasn't successful.

Send all of these SMS commands to the tracker correctly with „spaces”:

No.	Command	Info
1st	begin123456	reset all settings to factory default
2nd	apn123456 apn	sets the required APN for GPRS configuration (What is APN?) ¹
3rd	apnuser123456 user	sets the USERNAME for GPRS connection (optional) ^{1,2}
4th	apnpasswd123456 psw	sets the PASSWORD for GPRS connection (optional) ^{1,2}
5th	adminip123456 85.159.212.95 31200	sets our server's IP address and Port number
6th	t030s***n123456	sets the report time interval to 30 seconds ³

IMPORTANT NOTES!

- 1 The "**apn**", "**user**" and "**psw**" depends on your SIM provider, for more information check their website or call them up!
- 2 Do not send this messages if don't need USERNAME and PASSWORD for the GPRS connection!
- 3 The report interval must NOT be less than 5s (max time for simple TK102 and TK103 is 30s)
- 4 "123456" is the default password, if it's changed you have to use your chosen one
- 5 Do not forget to use "spaces" in the commands!

Not working?

Check the most frequent problems at the end of this document!!!

CONTINUE CONFIGURATION WITH **STEP #4**

8 Step #3 - Configure your COBAN type GPS tracker

Turn ON your GPS tracker and follow these steps carefully. After every SMS (except the fix030s***n123456) you **must receive an „OK” message from the tracker** as a response otherway the configuration wasn't successful.

Send all of these SMS commands to the tracker correctly with „spaces”:

No.	Command	Info
1st	begin123456	reset all settings to factory default
2nd	GPRS123456	sets the device to GPRS mode (default mode is SMS)
3rd	APN123456 apn	sets the required APN for GPRS connection ¹
4th	up123456 user psw	sets the Username and Password for GPRS connection (optional) ^{1,2}
5th	adminip123456 85.159.212.95 31200	sets our server's IP address and Port number
6th	fix 030s***n 123456	sets the report time interval to 30 seconds ³

IMPORTANT NOTES!

- 1 The **“apn”**, **“user”** and **“psw”** depends on your SIM provider, for more information check their website or call them up!
- 2 Do not send this messages if don't need USERNAME and PASSWORD for the GPRS connection!
- 3 The report interval must NOT be less than 5s (max time for simple TK102 and TK103 is 30s)
- 4 **“123456”** is the default password, if it's changed you have to use your chosen one
- 5 Do not forget to use "spaces" in the commands!

Not working?

Check the most frequent problems at the end of this document!!!

CONTINUE CONFIGURATION WITH **STEP #4**

9 Step #4 - Add the GPS tracker to your CorvusGPS account

If SMS configuration process finished successfully, then only one step remaining, add the GPS tracker to your CorvusGPS account.

Follow the steps below:

- **Register** a CorvusGPS account (visit main page and click registration button)
- **Verify** the registered **email address** (email sent by the system) and sign in to your account
- Click to **"GPS trackers"** menu point at the **"Dashboard"**
- Click to **"Add new GPS tracker"** button to start our wizard tool
- Complete the Wizard step by step

After you finished the wizard you are ready to use our tracking system. Click to **Map icon** or the **Map menu** point and enter to mapping system.

IMPORTANT! - GPS TRACKERS WITH 12 DIGIT ID

If the IMEI number of your device starts with "355227" (eg.: **355227042964489**) then you have a great chance that your device is using a 12 digit ID instead of 15 digit IMEI number for identification.

Here is how to get your 12 digit ID from the 15 digit IMEI number of your device:

Example 15 digit IMEI:	355227042964489
Remove the first 4 character:	27042964489
Then write a "0" to the front:	027042964489

So if your IMEI is **355227042964489** then your 12 digit ID - what you will need to enter in our wizard - is **027042964489**.

If your device use a 12 digit ID then select **"TK102 (12 digit ID)"** from the model list and enter the **12 digit ID**.

10 The most frequent problems and solutions

10.1 What is APN? / Wrong APN settings

The Access Point Name (APN) need the GPS tracker for connecting to the Internet and send real-time location info to our server. The mistyped or wrong APN is the most common issue when the GPS tracker not appears in our tracking system, but you can check the position in SMS successfully.

How to find the APN?

- A. **The APN depends on your SIM provider! Please ask your SIM provider about the actual APN (and username + password if needed) or check this information at your SIM provider's official website.**
- B. If you wasn't find your APN you can check at the **APN list at Wikipedia** (<http://wiki.apnchanger.org>), but we can't warrant that the information is up to date, so better if you ask your mobile company or check at the official website.
- C. If you wasn't find your APN you can also check it with this free [Android APN checker](#) app, but we can't warrant that the information is up to date, so better if you ask it or check at the official website.

10.2 No GPS signal

TK102 and TK103 GPS trackers usually don't send location data if GPS signal is weak and no GPS fix, so when the location wasn't determined. For the first GPS fix it will need some time, so place the tracker outdoor, where the GPS signal is good and let it working for 15-20 minutes.

10.3 Invalid IMEI

When you try to add the GPS tracker to CorvusGPS.com's fleet tracking system the wizard informs you that the IMEI you entered is invalid. This means that this number is not a valid IMEI so it's not guaranteed to work at all or it might not be unique so it's possible that more than one device sends data with the same ID. Please check the numbers again, but if you have not made a mistake in this case we can't add this device to our system, please contact with the seller to suggest you another software.

10.4 No Coordinates at the chosen interval

In our tracking software this message means that we have not received any location data from your GPS tracker yet. If “Time interval” option is selected instead of “Last position” in the tracking software and get this message then it only means that there isn’t any stored data from the GPS tracker in the selected time interval.

10.5 If the device does not respond to SMS commands

- SIM card has run out of credit
- SIM card’s PIN code request is not disabled
- SIM card not placed well into the SIM socket
- The battery is dead
- The tracker is dead

11 List of all XEXUN commands

FUNCTION	COMMANDS	EXAMPLE
Password modification	password+old password+space+new password	password123456 666888
The password should be 6 digitals		
Authorization	admin+password+space+cellphone number	admin123456 13311112222
Maximum 4 authorized numbers can be set. Use the same way to set them. The tracker will respond for any number if no authorized number configured.		
IP and Port Setting	adminip+password+space+IP address+space+port	adminip123456 192.167.1.1 8899
P.S: Configure TK102 and TK103 GPS trackers to send location data by GPRS to the tracking system.		
APN setting	APN+password+space+the user's APN	APN123456 internet
For real-time GPS tracking (GPRS data connection) you have to configure the APN (Access Point Name). The APN depends on your SIM card provider.		
APN user name setting	Apnuser+password+space+apn's username	apnuser123456 come
To connect the Access Point (APN) sometimes need an APN username and an APN password. This command set the APN username.		
APN password setting	Apnpasswd+password+space+apn's password	apnpasswd123456 cmet
To connect the Access Point (APN) sometimes need an APN username and an APN password. This command set the APN password.		
Interval tracking	t030s005n+password	t030s005n123456
t=time, s=second, m=minutes, h=hour, n=times, "***n" means unlimited times. (example: t030s005n123456 means track 5 times for 30s interval) The minimum interval time is 5 seconds (new version tracker), 30 seconds (old version), the maximum times is 250 times.		
Tracking mode	tracker+password	tracker123456
Send this command to switch the device to tracking mode.		
Track once	tracking one / or call the tracker once	tracking one
Send this command or call the tracker and it will send the location in SMS one time.		
Listen in mode	monitor+password	monitor123456
Switch the GPS tracker to "Listen in" mode. In "Listen in" mode you call the tracker it will reply in SMS with location info and turn on the microphone of the device and you will hear the voices near the device.		
Geofence	stockade+password+space+longitude,latitude;longitude,latitude	stockade123456 22.567185,114.051248; 22.555666, 114.777888
If you configure a Geo Zone then the tracker will sent a location report message (stockade report when the GPS moves out from the pre-configured zone.		
Movement Alert	move+password	move123456
If the tracker will move 500m at least it will notify you about that in SMS.		
Overspeed Alert	speed+password+space+080	speed123456 080
If the GPS tracker's speed is more that this pre-configured value than the tracker send a speeding alert.		
Low battery Alert	no needing to set up	No needing to set up
If the backup battery's voltage is less than 3.7V, it will send a low battery SMS.		

Initialization	begin+password	begin123456
This command restore factory default settings. Factory default password is "123456". If you changed and forget the password, you need update the firmware.		
IMEI Checking	imei+password	imei123456
Send this message to get the IMEI number of the GPS tracker.		
SOS	no needing to set up	No need to set up
If somebody press the SOS button of the device, it will send a "help me" SMS message with the coordinates for authorized numbers or to the server.		
Ignition alert	fortify+password	fortify123456
This option is only for TK103 vehicle GPS tracker. The tracker send an SMS when ignition is turned on.		
Ignition Status checking	fortified+password	fortified123456
Send this command if you want to make sure that ignition checking is on.		
Main power losing alert	no needing to set up	No need to set up
You receive an SMS notification if hard wired power is down.		
Time zone setting	Time zone+password+space+GMT time	Time zone123456 2
Set the Time Zone of the message. The factory default is GMT-0, please do not change it!		
Individual Website setting	Home+password+space+the user's website	home123456 www.tracker.com
Send the SMS tracking messages to a per-configured website.		
Relay on/off (stop engine)	Powercar+password+space+1 (or 0)	Powercar123456 1
This option is only for TK103 vehicle GPS trackers. You can turn a relay on and off with SMS commands. 1= Turn on, 0= Turn off		
Shake Alert (with the motion sensor)	shake+password+space 1-10	shake1234656 1
The new version TK102-2 and TK103-2 GPS trackers have a motion detect feature. It can start reporting when motion (shake) detected. You can configure strength from 0 to 10 where 0 is soft share, 10 is heavy shake. 0 means turned off.		
Read SD card	Readsd+password+space+1	readsd123456 1
The new version TK102-2 and TK103-2 GPS trackers can log the data into memory car when no GPRS connection, but it's not upload this data automatically. If you want to upload this info you need to send this SMS command.		
SMS report	smslinkone+password	smslinkone123456
Send report in SMS one time (it's working during the gprs communication too...)		
Restart tracker	restart+password	restart123456
This command is restart the tracker.		

IMPORTANT NOTES!

No any warranty that all of the commands supported by your GPS tracker!
